

Bonus Chapter

Properly Setting Up Your Printer

In This Chapter

- ▶ Setting up Macintosh printers
 - ▶ Setting up Windows printers
-

Before you can print or create a PDF file of your document, you first need to make sure your system is set up with the right printer driver and printer description files — without these, your output is not likely to match your needs or expectations.


It's also important to set these up before you use the Preflight tool (covered later in this chapter) to detect possible output problems before you print because the Preflight tool checks your document against the active printer settings (such as color separations), and you can't have selected printer settings until the printer is set up.

The Mac and Windows platforms handle printing differently, so in this chapter I've divided all system-specific printing information, such as the coverage of drivers, into platform-specific sections.

Setting up Macintosh printers

Although you choose the printer type in the Setup pane of the InDesign Print dialog box, you still need to set up the printer on your Mac before you can use it.

In some cases, Mac OS X sets up the printer for you. In other cases, you may need to run an installation program that comes with the printer — sometimes, you need to run this software *before* you connect the printer to the Mac. Your printer documentation will explain the correct steps.

To see whether your printer is actually installed correctly, as well as to change its settings, you use the Print & Fax system preference by choosing  → System Preferences → Print & Fax and then clicking Set Up Printers in the resulting Print & Fax system preference. The Printing pane should display by default (if not, go to it) and lists any installed printers.

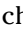
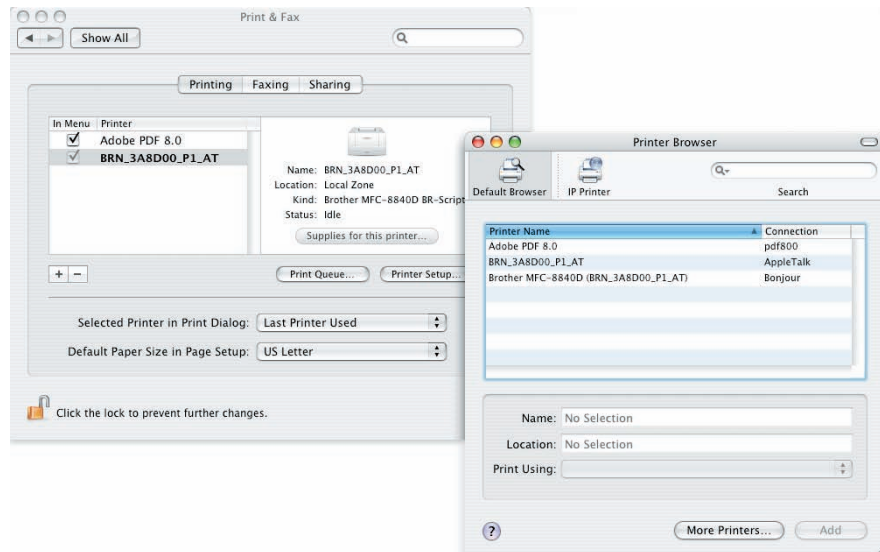
If you see the printer to which you want to print in the Print & Fax system preference, you've already installed your printer. Otherwise, make sure the printer you want to set up is connected to your Mac (directly or through the network) and turned on. (If you use a network printer, make sure the right network protocols, such as IP and AppleTalk, are turned on through the Network pane in the System Preferences dialog box, which you access by choosing  → System Preferences.) Then click the + iconic button below the printer list to open the Print Browser dialog box (in Mac OS X 10.4 [Tiger]) or the unnamed dialog box (in Mac OS X 10.5 [Leopard]) so you can locate the printer (whether directly attached or available via the network). Select the desired printer and be sure the correct driver is selected in the Print Using pop-up menu. Click Add so the printer displays in your applications' Print dialog boxes.

Figure BC-1 shows the Printer Browser dialog box.

Figure BC-1:

The Print & Fax system preference in Mac OS X 10.4 (Tiger) and its Printer Browser dialog box show which printers are available and lets you add and configure them. (Mac OS 10.5 [Leopard] has a nearly identical but unnamed dialog box.)



How you configure an installed printer varies based on the software provided with the printer. In some cases, a printer's configuration software is accessible through the Print & Fax system preference's Printer Setup button. In other cases, you need to run a separate utility that comes with the printer or use controls on the printer itself.



You may need to install a PostScript Printer Description (PPD) file that contains specific details about your printer. This file should come on a disk or CD with your printer and is often installed with the printer's setup program. Otherwise, download it from the printer manufacturer's Web site. These files should reside in the PPD folder in the Mac's `System/Library/Printers` folder. Note that Mac OS X preinstalls some PPDs for you, particularly those for Apple-branded printers and some Hewlett-Packard printers. If you're installing a printer not connected to your computer or network, such as the imagesetter used by your service bureau, you need to install the PPD files so InDesign knows what its settings are; installing the printer software isn't necessary.

Mac OS X supports multiple printers, but it also lets you define the default printer. To change the default printer, open the Printer List dialog box, choose the printer you want to be the default, and then click Make Default.

Setting up Windows printers

The process for setting up printers varies based on the version of Windows you have.

Windows XP

In some cases, Windows XP will set up the printer for you. In other cases, you may need to run an installation program that comes with the printer — sometimes, you need to run this software *before* you connect the printer to the PC. Your printer documentation explains the correct steps.

To see whether your printer is actually installed correctly, as well as to change its settings, you use Windows XP's built-in Printers Control Panel:

- ✓ In standard XP, choose Start⇨Settings⇨Printers and Faxes
- ✓ In XP set to Classic Start menu mode, choose Start⇨Control Panel⇨Printers and Other Hardware

Either way, you get a window with a list of existing printers and an icon labeled Add New Printer. Double-click the printer that you want to set up or double-click Add New Printer (you likely need either a disk that came with the printer or the Windows CD-ROM if you add a new printer because Windows needs information specific to that printer).



If you're setting up a printer connected through the network, you usually select the Local Printer option during installation. The Network Printer option is for printers connected to a print server, as opposed to printers connected to a hub or router. (A *print server* is a special kind of router, but it's typically used only for printers that don't have networking built in, such as many inkjet printers.) In some cases, even if your printer uses a print server, you still install the printer as a local printer and then create a virtual port that maps to a network address (Hewlett-Packard uses this approach).

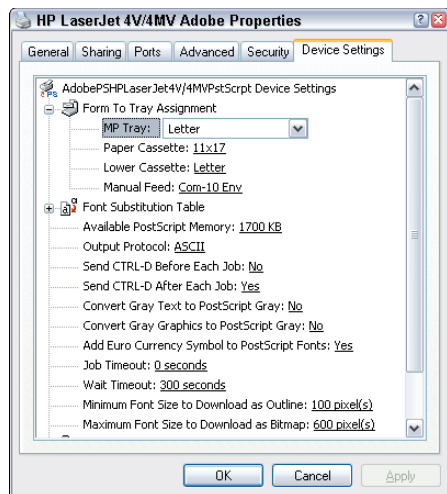
If you're installing a printer not connected to your computer or network, such as the imagesetter used by your service bureau, you need to install the PPD (PostScript Printer Description) file so InDesign knows what its settings are. (You don't need to install the printer software.) This file should come on a disk or CD with your printer and is often installed with the printer's setup program. Otherwise, download it from the printer manufacturer's Web site. (Windows places PPD files in the `Windows\System32\spool\drivers\w32x86` folder; note that the first folder may be named `WinNT` or `WinXP` instead of `Windows`.)

After you open an existing printer, choose `Printer → Properties` to display the dialog box shown in Figure BC-2. The one pane you most need to pay attention to is the Device Settings pane, which is where you specify all the device settings, from paper trays to memory to how fonts are handled. (Note that some printers — such as Epson inkjet printers — don't have this pane because they come with their own configuration software that handles these controls.)

For PostScript printers — the typical type of printer in a professional publishing environment — this pane contains several key options, as follows:

- ✓ **Font Substitution Table:** This option opens a list of available fonts and lets you select how any TrueType fonts are translated to PostScript. The best (and default) setting is to have the printer translate TrueType fonts such as Arial to PostScript fonts such as Helvetica. (The Windows standards of Arial, Times New Roman, Courier New, and Symbol are set by default to translate to the PostScript fonts Helvetica, Times, Courier, and Symbol. PostScript fonts are set by default to Don't Substitute.)
- ✓ **Add Euro Currency Symbol to PostScript Fonts:** Be sure to select this option so the euro symbol (€) is available in all output.

Figure BC-2:
The Device Settings pane in Windows XP's setup for PostScript devices.



To set a printer as the default printer, right-click the printer in the Printers window (as described earlier in this section) and select Set Default Printer from the contextual menu that appears.

Windows Vista

The newest version of Windows, Vista, has a different interface for adding a printer, though the underlying process is the same as in previous versions.

Vista automatically adds USB printers that are powered on. For other printers, follow this process:

First, choose Start⇨Control Panel, then click the Printer link in the Hardware and Sound section. (Or choose Start⇨Control Panel, select Classic view from the left side of the dialog box and then double-click the Printers button the pane at the right.)

You get a window with a list of existing printers. Double-click the printer that you want to set up or click the Add a Printer button at the top of the pane (you likely need either a disk that came with the printer or the Windows CD-ROM if you add a new printer because Windows needs information specific to that printer).

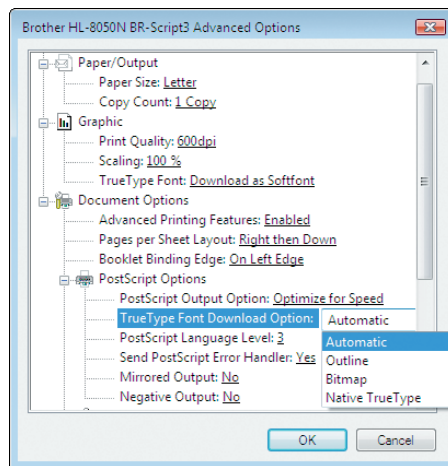


If you're adding a printer connected through the network, you usually select the Add a Local Printer option during installation. The Add a Network, Wireless, or Bluetooth Printer option is for printers connected to a print server, as opposed to printers connected to a hub or router. (A print server is a special kind of router, but it's typically used only for printers that don't have networking built in, such as many inkjet printers.) In some cases, even if your printer uses a print server, you still install the printer as a local printer and then create a virtual port that maps to a network address (Hewlett-Packard uses this approach).

If you're adding a printer not connected to your computer or network, such as the imagesetter used by your service bureau, you need to install the PPD (PostScript Printer Description) file so InDesign knows what its settings are. (You don't need to install the printer software.) This file should come on a disk or CD with your printer and is often installed with the printer's setup program. Otherwise, download it from the printer manufacturer's Web site. (Windows places PPD files in the `Windows\System32\spool\drivers\w32x86` folder; note that the first folder may be named `WinVista` instead of `Windows`.)

To configure a printer after it has been added, select it from the printer list, then click the Select Printing Preferences button at the top of the pane. The one pane you most need to pay attention to is the Advanced Options pane, shown in Figure BC-3, which is where you specify all the device settings, from paper trays to memory to how fonts are handled. (Note that some printers — such as Epson inkjet printers — will not have this pane, since they come with their own configuration software that handles these controls.) You access this pane by clicking the Advanced button in the Layout pane of the Printing Preferences dialog box.

Figure BC-3:
The
Advanced
Options
pane in
Windows
Vista.



Another way to configure a printer is to double-click its icon in the pane to open the printer queue. Choose Printer↔Properties and go to the Device Settings pane, which is nearly identical to the Windows XP setup pane of the same name, shown in Figure BC-2.

For PostScript printers — the typical type of printer in a professional publishing environment — this pane contains several key options in the PostScript Options section.

One option, TrueType Font Download Option, has a pop-up menu that lets you choose how TrueType fonts are handled. The default setting of Automatic should work in most cases, but if you are outputting to an image-setter, check with your service bureau as to whether they'd prefer Outline instead (or, more rarely, Native TrueType).

The other PostScript Options settings should not be changed unless your service bureau requests it. Note that InDesign provides the three key controls in its own Print dialog box matching what you can do here: PostScript Language Level (the PostScript pop-up menu in the Print dialog box's Graphics pane), Mirrored Output (the Flip pop-up menu in the Output pane, and Negative Output (the Negative check box in the Output pane).